

HUXLEYS

NEUE WELT



VENUE SPECS

Last update: 01/2026

HUXLEYS NEUE WELT

Hasenheide 107-113

10967 Berlin - Germany

Phone: +49 30 780 99 846

Mail: info@huxleysneuewelt.com

www.huxleysneuewelt.com

GENERAL INFORMATION02

RULES & DISCLAIMERS05

PA, MONITORING & FOH07

LIGHTING09

PLOT..... 10

HALL11

LIGHTING PLOT..... 12

MAP & PARKING 13

PHOTOS 14

FIXPATCH 16

CHANNELVENUES

A DIVISION OF CHANNEL MUSIC GMBH

Gleditschstraße 79 | 10823 Berlin

Phone: +49 30 780 99 828 | Mail: booking@channelmusic.de | www.channelvenues.de

GENERAL INFORMATION

CAPACITY	1.600 standing 800 seated
AREA	1225 m ²
EMPORE	300 standing 200 seated follow spot positions
STAGE	Width 12 m Depth 7 m Height 1,4 m
RIGGING	Frontruss: Prolyte H40V - Width 12 m Midtruss: Prolyte H40V - Width 12 m Backtruss: Prolyte H40V - Width 13 m Backdroptruss: HOFKon 290-4 Width 12 m Sound- and Lightequipment: fixed installed! (Page 6) <i>Extra weights and changes to the house rig need to be approved 2 weeks in advance and may result in extra cost!</i>
BACKSTAGE	Dressing Rooms 2x à 15 m ² including WC and Shower, well-furnished for 8 persons 1x à 15 m ² well-furnished for 6 Persons
PRODUCTION OFFICES	1x à 15m ² furnished with working desks for 6 persons 1x à 10 m ² furnished with working desks for 4 persons
MERCHANDISE SPOT	There is a well-lit and furnished merch spot with tables, grids and pinboard displays inside the main hall. Furniture can be removed, when production travels with their own displays and furniture for this. Don't hesitate to ask our friendly local crew for additional power or help in any way. Please notice: We charge 250 Euro + VAT for the permission to sell merchandise.

GENERAL INFORMATION

LIFT

Can only be used for goods, not for people (there is a separate lift for this) - can only be loaded WITHIN the lines, violation might easily cause malfunction!

Capacity 2500 kg
Inner Sizes:
width 2,20 m
deep and height 2 m
doorsize 2,20 m
doorheight 2 m

POWER

Separated circuit for Sound and Light.
Powerlock opportunities for both circuits (Sound & Light).

Lights (max. Load 250 A)

1x 125A CEE 3 Phase (free)

1x 63A (free)

1x 125A CEE 3 Phase (blocked by Venue)

1x 63 A CEE 3 Phase (blocked by Venue/Dimmer-MLVT)

1x 32 A CEE 3 Phase (blocked by Venue/Dimmer)

1x 32 A CEE 3 Phase (free)

2x 16 A CEE Blue SinglePhase

10x SinglePhase (Schuko=german Powerconnection)

1x PowerLoc 3 Phase/PE / Neutral max. 160 A

Power Distribution from 125A CEE to 2x63A CEE / 4x32A CEE / 8x16A CEE

Power Distribution from 32A CEE to 2x16A CEE

Sound (max. load 125A)

1x 125A CEE 3 phase (blocked by Venue)

1x 32A CEE 3 phase (available on stage distro)

2x 63A CEE 3 phase (stage distro)

6x 16A CEE Single Phase (available on stage distro)

1x 63A CEE 3 phase (blocked by Venue)

2x 32A CEE 3 phase (blocked by Venue)

1x 16A CEE single phase (blocked by Venue)

4x Single phase (schuko)(blocked by Venue)

1x PowerLoc 3 phase / Pe / neutral max. 160 Amp.

Additional (close to empore):

1x 63A CEE 3 phase

1x 32A CEE 3 phase

Various power distributors can be rented upon request

CATERING / KITCHEN

Kitchen: 30 m² room furnished with a sink, running cold and hot water, professional oven with a separated 32A 3phase powerplug and a fridge
Catering area: 40 m² room furnished with benches and tables for 20 persons at the same time. 3 singlephase 16A schuko and a fridge

GENERAL INFORMATION

SHOWERS/TOILETS	4x Showers / 5x Toilets
WLAN	2x 50.000 DSL
PARKING	<p>Our parking area is located next to the public parking for the entire site. There is space for at least two nightliners with trailers.</p> <p>Trucks can be parked separately on the designated area in front of the bowling center – however this works only upon request as it needs to be registered.</p>
LOADING	Only at the backside of the venue - no exceptions!
BUS POWER	<p>1x 32A 3phase CEE 1x 16A 3phase CEE 4x singlephase (Schuko)</p>



RULES & DISCLAIMERS

LASER EFFECTS

DE Wenn Lasereffekte im Huxleys zum Einsatz kommen sollen, ist eine Abnahme bzw. Stellungnahme und Gefährdungsbeurteilung gemäß BetrSichV durch einen **Sachverständigen vor Ort** (wird verbindlich vom Haus bestellt) notwendig und die Anwesenheit eines Laserschutzbeauftragten ist vorgeschrieben.

Achtung: Die Abnahme und Gefährdungsbeurteilung durch einen Fachkundigen (Laserschutzbeauftragten) allein reicht **nicht** aus!

DGUV 203-036 - 4.1 „Die Qualifizierung zu Laserschutzbeauftragten beinhaltet nicht die Befähigung zur Prüfung von Show- und Projektionslasern.“

Der Einsatz von Lasern muss rechtzeitig (mit einem angemessenem Vorlauf von mindestens 7 Tagen) beim Haus angemeldet werden. Ein spontaner Einsatz von Lasern ist am Veranstaltungstag explizit nicht mehr möglich.

Kann eine der Voraussetzungen nicht erfüllt werden, machen wir von unserem Hausrecht Gebrauch und untersagen konsequent den Einsatz des geplanten Effekts.

ENG If laser effects are to be used at Huxleys, an acceptance/statement and risk assessment in accordance with the BetrSichV by an expert with the necessary qualifications (Sachverständiger, **not** Fachkundiger) on-site (which is mandatorily ordered by the venue) is necessary, and additionally the presence of a laser safety officer is required. Attention: The acceptance and risk assessment done only by a laser safety officer is not sufficient!

DGUV203-036 - 4.1 „The qualification for laser safety officers does not include the ability to inspect show and projection lasers. The use of lasers must be registered with the venue in a timely manner (with a reasonable lead time of at least 7 days). A spontaneous use of lasers on the day of the event is explicitly not possible. If any of the requirements cannot be met, we will exercise our house rights and consistently prohibit the use of the planned effect.“



RULES & DISCLAIMERS

SFX/CONFETTI/CO2

Confetti in general, as well as other effects can be used at Huxleys. However they are only allowed under a certain set of rules.

1. Any confetti/Co2 shooting device must be dimensioned reasonably in relation to the size of the venue and clearance. (Stadium shots are not allowed under any circumstances)
2. They need to be angled correctly at around 45 degrees (this also counts for devices like Co2 Jets) as they risk damaging our very delicate ceiling
3. There will be an extra cleaning fee, if confetti is being used
4. Fog machines and hazers can be used, after our smoke alarm has been deactivated. Our local LD will talk to you about this on site.
5. Pyro/Fire - Fire effects (like flame jets) can be used, but the venue needs to be informed at least 7 days before the show, so we can register the event at the local fire department and book fire guards. (Mandatory)

Anything that includes explosives (Like T1 effects) follows the same rules like the regular fire effects, but for this we additionally require a special permit, that the promoter needs to get from „LaGetSi Berlin“ → (Landesamt für Arbeitsschutz, Gesundheitsschutz und technische Sicherheit Berlin) Without this, the use of any of these effects is impossible.

VENUE TECHNICIANS

General note about venue technicians - The booked venue technicians are paid to take care of the house system. They will gladly assist the touring technicians and answer any house or system related questions. However they are not booked to set up and run rental equipment and/or equipment that is brought by the tour. For insurance reasons we cannot instruct them to touch any equipment, that doesn't belong to the venue.

PA, MONITORING AND FOH

PA – SYSTEM

- 16x L'Acoustic K3 (8 per Side)
- 8x L'Acoustic KS28 Sub (4 Per Side in Cardiod)
- 4x L'Acoustic X8 (Front Fill)
- 1x L'Acoustic P1- Controller (FOH)
- 6x L'Acoustic Amp LA12X
- 1x L'Acoustic Amp LA4X

MIXING DESKS

- FOH Yamaha CL5
- MONS Yamaha QL5

STAGE RACK

STAGE LEFT WING

- 2x 63A 3ph with individual RCD
- 1x 32A 3ph + 6x 16A CEE with individual RCD
- 1x Yamaha SWP1-8 L2 Switch
- 2x Yamaha RIO 3224-D, Redundant mode
- 1x Camtec 48ch Splitter
- 2x 2x LK85 connector
- 2x LK85 M-XLR tails

MONITORS

- 12x L' Acoustic X12
- 3x L'Acoustic Amping LA4X

SIDEFILLS

em ipsum

- 4x 4x L'acoustic Arc Line Source Array / 1x15" / 1x1,4" 22,5° horizontal / +40° / -20° vertikal
- 2x Martin Audio WS 218X Subbass/2x18
- 1x L'Acoustic Amping L4X
- 1x Crest Audio Pros 9200 Amping

DRUMFILL

- 2x Martin Audio S-18 Subbass/1x18"

PA, MONITORING AND FOH

MICROPHONES

- 3x SHURE SM 58-S
- 11x SHURE SM 58
- 8x SHURE SM 57
- 2x SHURE Beta 91
- 3x SHURE Beta 52a
- 5x SHURE Beta 58a
- 4x SHURE Beta 57a
- 6x Shure KSM-137
- 7x Sennheiser e604 inkl. Tomclamp
- 2x Sennheiser e606
- 1x Sennheiser MD-421
- 2x Beyerdynamic MC 730

DI BOXES

- 11x LD Systems LDI 02 - Active Mono DI
- 3x BSS AR116 - Active Mono DI
- 4x Palmer Pan04 - Passive Stereo DI
- 2x Palmer Stereo Line Isolation Box

SUBSNAKES

- 6x 12 Channel LK37
- 3x 5m
- 3x 10m

MICROPHONE STANDS

- 18x K&M Tall Boom Tripod
- 3x K&M Medium/tall Boom Tripod
- 3x K&M Short Boom Tripod
- 3x K&M Tall Straight w/ Round base
- 6x K&M Short Boom w/ Small round base
- 5x K&M Short Boom w/ Big round base
- 1x K&M 24030 Clamp

MISC

- 1x DJ Laptop stand
- 2x the box pro CX 5 Shoutbox
- 6x Cat5e DSL
- 2x Cat6a USC
- 3x Cat6a DSR

LIGHTING

FRONTTRUSS

- 4x Chauvet Strike Array 4 – Lite Blinder
- 6x DeSisti Leonardo 2000 – 2KW Stufenlinsen
- 6x Robe Robin 600 LED Wash

MIDTRUSS

- 7x Chauvet Rogue R2X Wash
- 4x Mac Quantum Profile
- 2x Atomic 3000 LED Strobe

BACKTRUSS

- 6x Chauvet Rogue R2X Wash
- 4x Mac Quantum Profile
- 2x Atomic 3000 LED Strobe

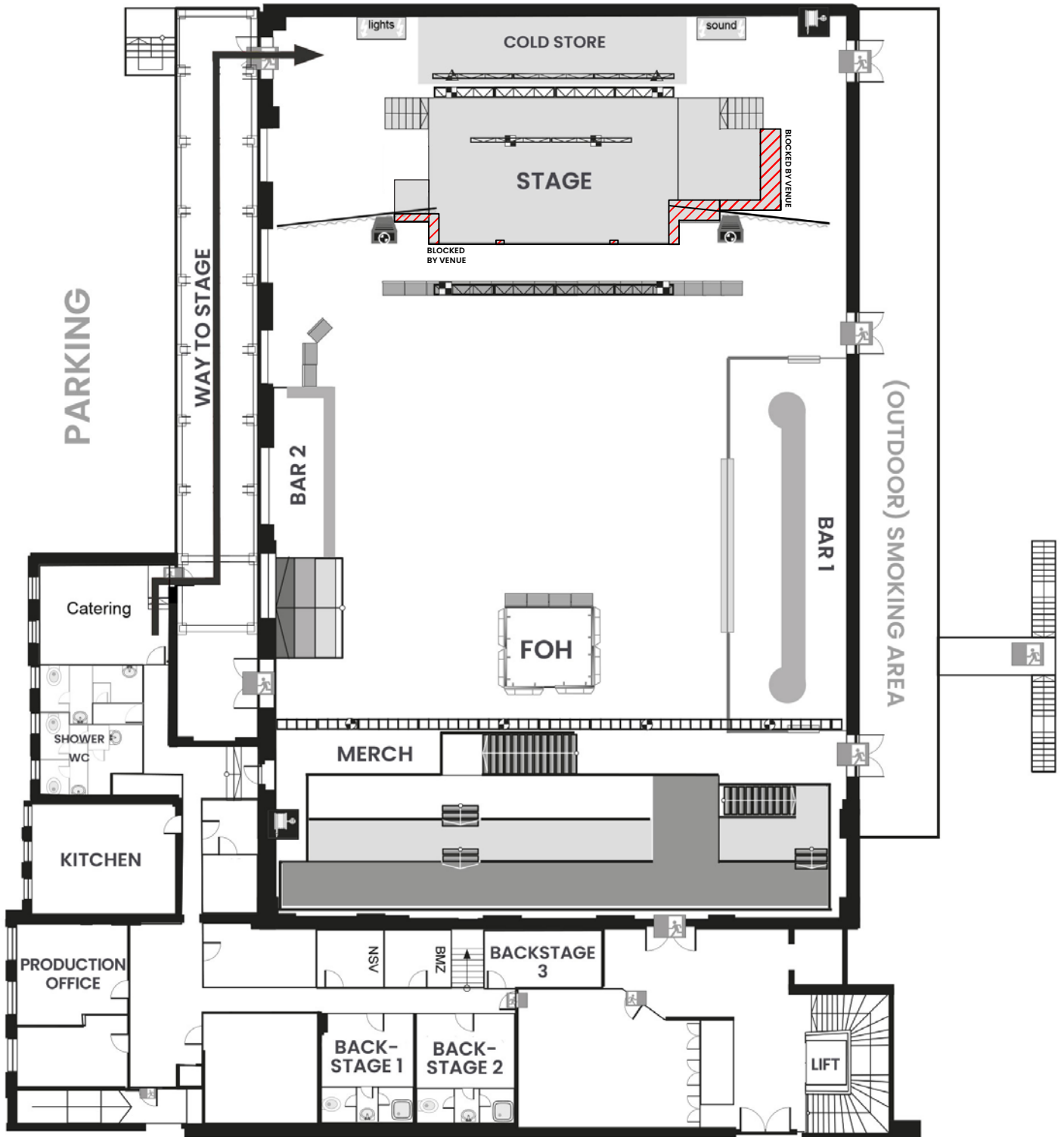
FLOOR

- 1x Hazebase Pro

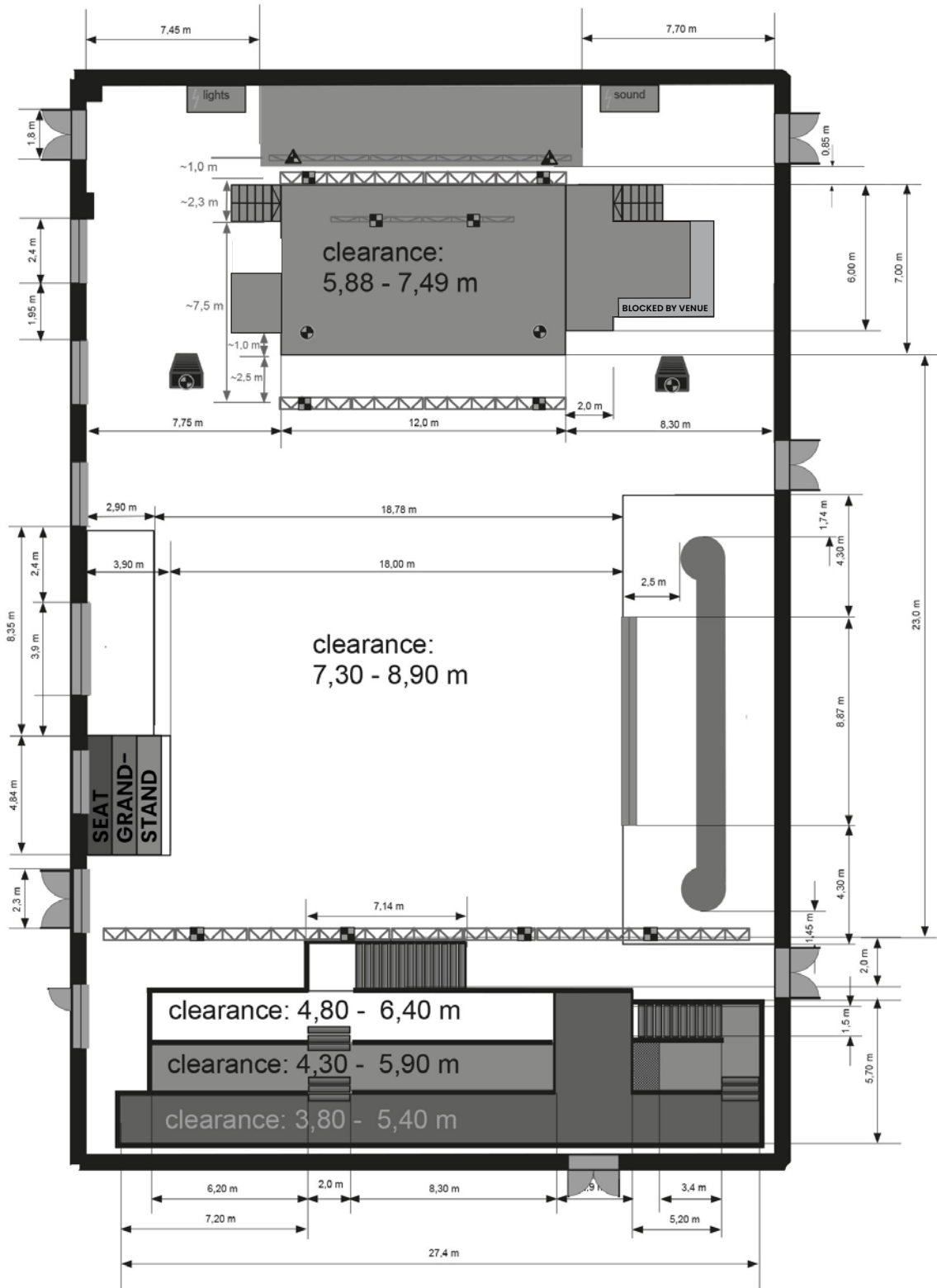
PERIPHERIE

- 3x Starville DMX Splitter 6RDM
- 1x Desk Chamsys MQ 80 + Fader Wing
FOH Multicore 3Ch 5 Pin + 2Ch 3 Pin
(2 Lines DMX blocked by Venue)
- 3x CAT7 (free)
- 1x MA Dimmer 12Ch (blocked by Venue)
- 1x MLVT 32A / 2x HAN (blocked by Venue)

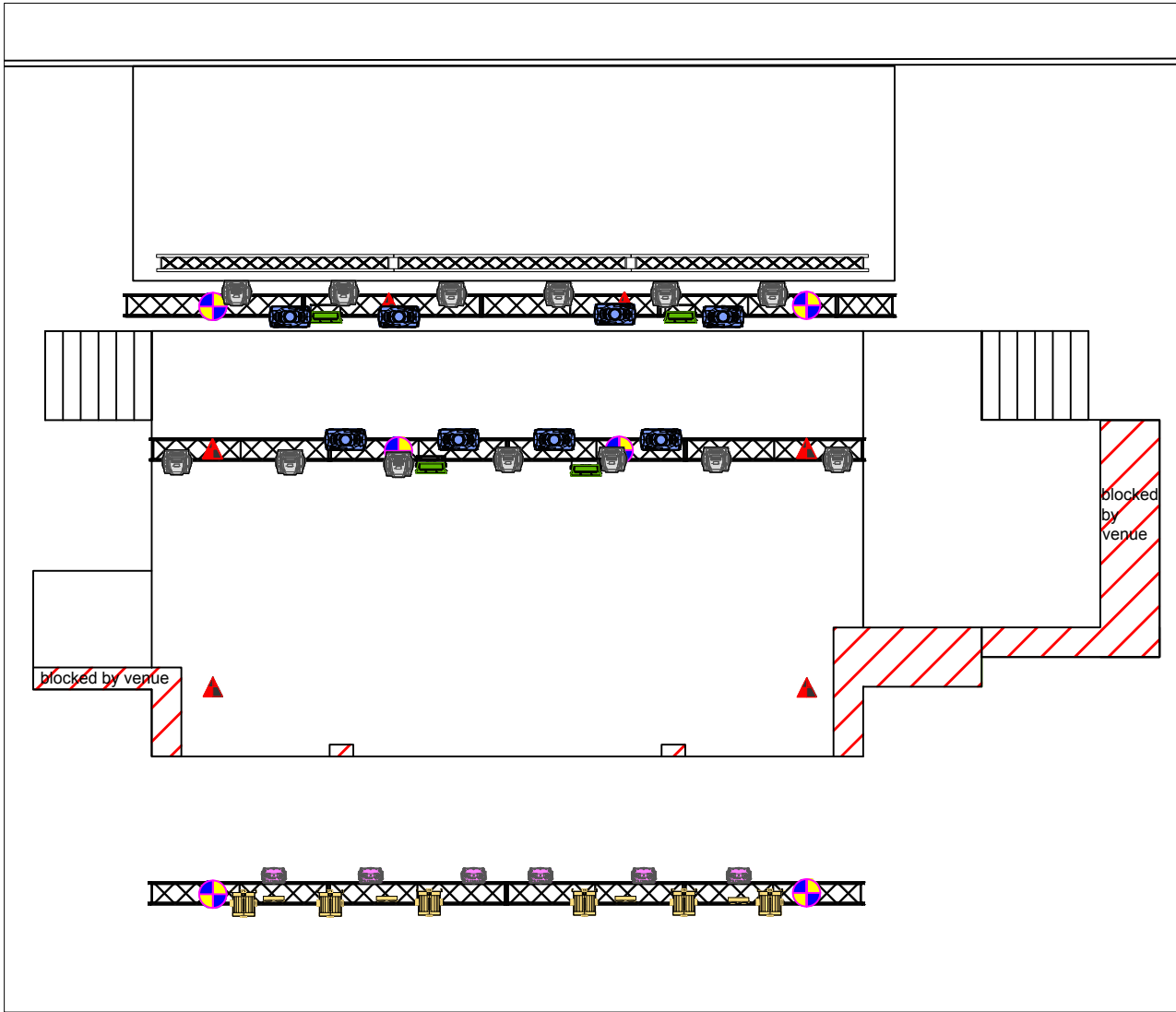
PLOT



HALL










LIGHTING PLOT



Allgemeine Anmerkungen

Flown fixtures:

- Chauvet Rogue R2X 
- Mac Quantum Profile 
- Robe 600 LED Wash 
- Desisti Leonardo 2KW 
- Chauvet Strike Array 4 Lite 
- Blinder 
- Atomic 3000 LED Strobe 

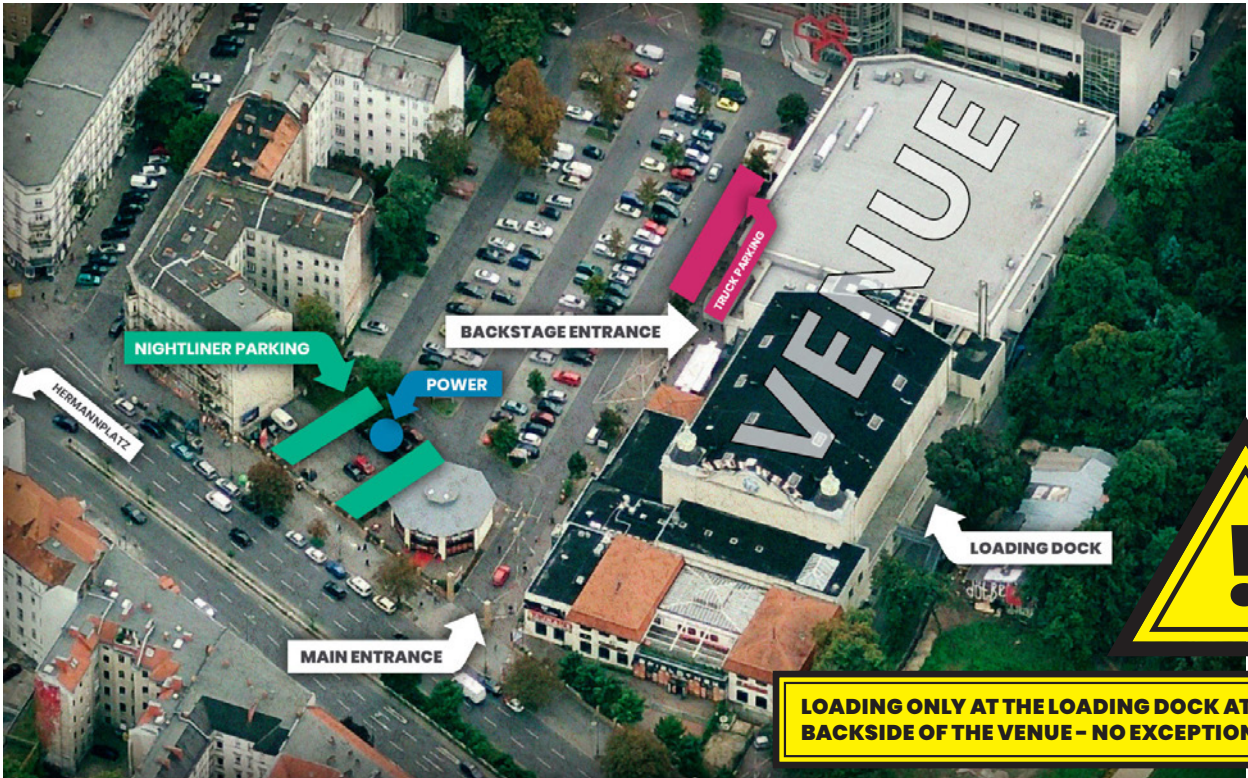
Nr.	Revision/Problem	Datum

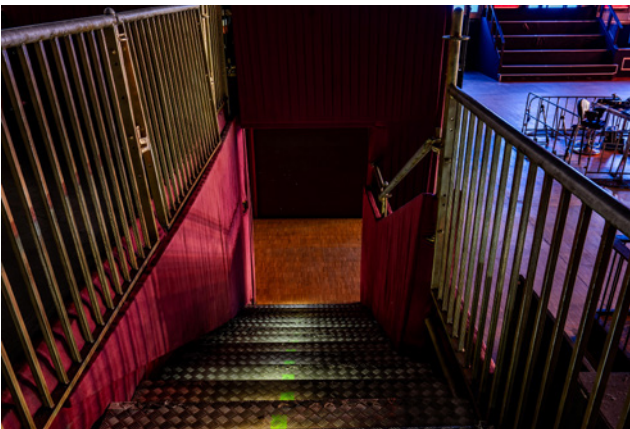
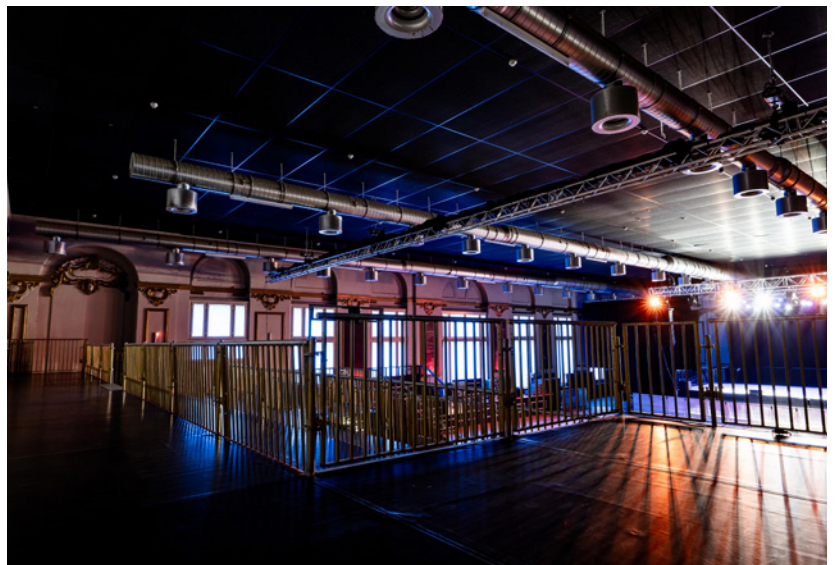
Firmenname und -adresse
 Channel Music GmbH
 Gleditschstr. 79
 10823 Berlin

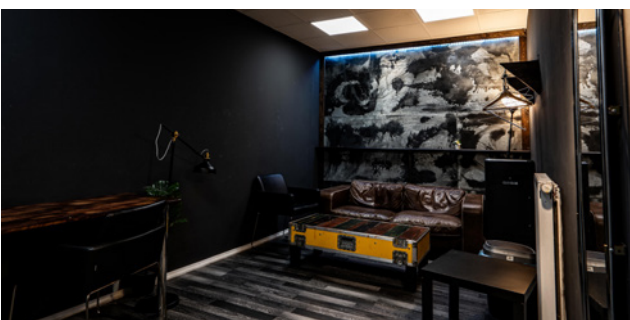
Projektname und -adresse

Projekt Huxleys2024.dwg	Plan
Datum 2025-09-27	
Maßstab	

MAP & PARKING







FIXPATCH

HEAD N°	MANUFACTURE	HEAD NAME	MODE	POSITION	DMX
UNIVERSE 1					
301	Martin	MacQuantumProf	Extended	Back	01-001
302	Martin	MacQuantumProf	Extended	Back	01-028
303	Martin	MacQuantumProf	Extended	Back	01-055
304	Martin	MacQuantumProf	Extended	Back	01-082
305	Martin	MacQuantumProf	Extended	Mid	01-109
306	Martin	MacQuantumProf	Extended	Mid	01-136
307	Martin	MacQuantumProf	Extended	Mid	01-163
308	Martin	MacQuantumProf	Extended	Mid	01-190
201	Chauvet	Chauvet R2X Wash	22 Ch	Back	01-217
202	Chauvet	Chauvet R2X Wash	22 Ch	Back	01-239
203	Chauvet	Chauvet R2X Wash	22 Ch	Back	01-261
204	Chauvet	Chauvet R2X Wash	22 Ch	Back	01-283
205	Chauvet	Chauvet R2X Wash	22 Ch	Back	01-305
206	Chauvet	Chauvet R2X Wash	22 Ch	Back	01-327
207	Chauvet	Chauvet R2X Wash	22 Ch	Mid	01-349
208	Chauvet	Chauvet R2X Wash	22 Ch	Mid	01-371
209	Chauvet	Chauvet R2X Wash	22 Ch	Mid	01-393
210	Chauvet	Chauvet R2X Wash	22 Ch	Mid	01-415
211	Chauvet	Chauvet R2X Wash	22 Ch	Mid	01-437
212	Chauvet	Chauvet R2X Wash	22 Ch	Mid	01-459
213	Chauvet	Chauvet R2X Wash	22 Ch	Mid	01-481
1001		Base Haze	2 Ch		01-511

FIXPATCH

HEAD N°	MANUFACTURE	HEAD NAME	MODE	POSITION	DMX
UNIVERSE 2					
1		2 kW Fresnel	1 Ch Dimmer	Front	02-001
2		2 kW Fresnel	1 Ch Dimmer	Front	02-002
3		2 kW Fresnel	1 Ch Dimmer	Front	02-003
4		2 kW Fresnel	1 Ch Dimmer	Front	02-004
5		2 kW Fresnel	1 Ch Dimmer	Front	02-005
6		2 kW Fresnel	1 Ch Dimmer	Front	02-006
601	Robe	Rob600LEDWash	Mode 3	Front	02-009
602	Robe	Rob600LEDWash	Mode 3	Front	02-024
603	Robe	Rob600LEDWash	Mode 3	Front	02-039
604	Robe	Rob600LEDWash	Mode 3	Front	02-054
605	Robe	Rob600LEDWash	Mode 3	Front	02-069
606	Robe	Rob600LEDWash	Mode 3	Front	02-084
11	Chauvet	Chauvet Strike 4 Array	10Ch	Front	02-099
12	Chauvet	Chauvet Strike 4 Array	10Ch	Front	02-109
13	Chauvet	Chauvet Strike 4 Array	10Ch	Front	02-119
14	Chauvet	Chauvet Strike 4 Array	10Ch	Front	02-129
901	Expolite	TourBar32RGBW	7 Ch	Backdrop	02-141
902	Expolite	TourBar32RGBW	7 Ch	Backdrop	02-148
903	Expolite	TourBar32RGBW	7 Ch	Backdrop	02-155
701	Martin	Atomic 3000 LED	14 Ch	Back	02-201
702	Martin	Atomic 3000 LED	14 Ch	Back	02-215
703	Martin	Atomic 3000LED	14 Ch	Mid	02-229
704	Martin	Atomic 3000LED	14 Ch	Mid	02-243