

HOLE⁴⁴

VENUE SPECS

Last update: 30.01.2024

HOLE

Hermannstraße 146

D-12051 Berlin

Phone: 0176 977 33 539

E-Mail: info@hole-berlin.de

GENERAL INFORMATION 02

SOUND 03

LIGHTING..... 04

FLOOR PLAN..... 05

PHOTOS 06

MAP & PARKING 07

CONTACT 09

HOLE

Hermannstraße 146, D-12051 Berlin

Website: hole-berlin.de

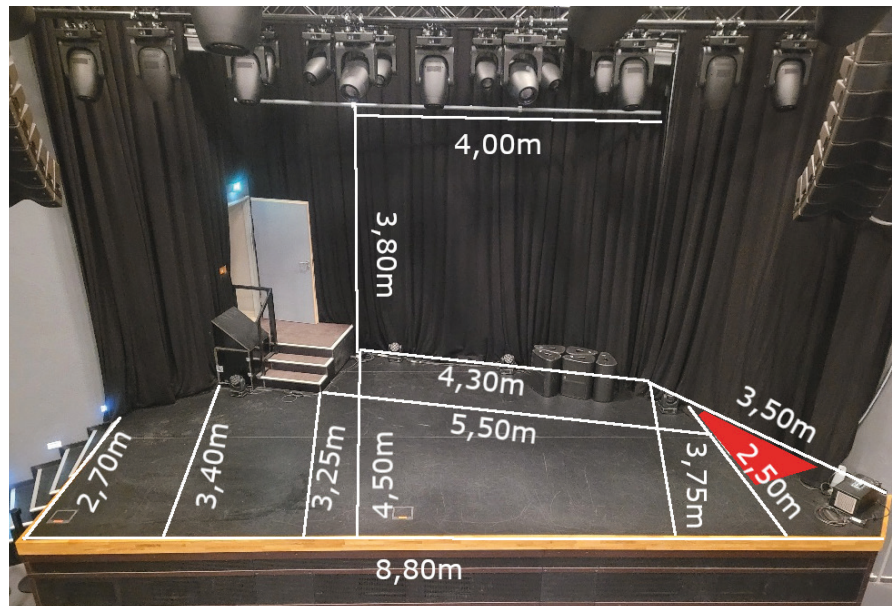
GENERAL INFORMATION

HALL Capacity - 650

BACKSTAGE Room 1 - 15 m² | Room 2 - 12 m²
WC, shower, sink

FACILITIES **Dressing Room**
WIFI available Two well furnished rooms, including toilet and shower shared.

STAGE



1x Drumriser 2m x 2m x 40cm and 1x DJ-Sandwich 2m x 1m x 1m are available.
Backdrop: 4m wide and 3m high

MERCH Merch Fee 150€ + Tax (*Stand rental without staff*)

**ELECTRICITY FOR
ADDITIONAL
SOUND-EQUIPMENT** 1x 32A CEE on stage-right
1x 16A CEE on stage-right
1x 16A Schuko on stage-right

**ELECTRICITY FOR
ADDITIONAL
LIGHT-EQUIPMENT** 1x 32A CEE on stage-left
1x 16A CEE on stage-left
1x 16A Schuko on stage-left

HOLE
Hermannstraße 146, D-12051 Berlin
Phone: 0176 977 33 539 E-Mail: info@hole-berlin.de
Website: hole-berlin.de

PA, Monitoring and FOH

PA – SYSTEM

- 24x L-ACOUSTICS KIVA Line Array Modul
- 6x L-ACOUSTICS SB-18 Subbass
- 2x L-ACOUSTICS SB 15m Subbass

AMPING

- 2x L-ACOUSTICS LA-RAK (3xLA8, 1xRK9U, 1xLA-Power, 1xLA-Panel G)

DELAY

- 4x L-ACOUSTICS KIVA Line Array Modul
- 1x L-ACOUSTICS LA4X (4x1000W / 4Ohm)

MONITORING

- 8x MARTIN AUDIO LE 1200
- 1x JBL PRX 425 Drumfill (1200W)
- 3x CREST AUDIO Pro 8200 (2x1450W / 4 Ohm) for 6 Mixes

FOH

- 1x SOUNDCRAFT Vi 3000 Mixing-Desk
- 1x SOUNDCRAFT Vi Stage Rack (64 In, 32 Out)

MICROPHONES

- 1x SHURE Beta 91A
- 2x SHURE Beta 52
- 6x SHURE KSM-137
- 5x Sennheiser e604
- 6x SHURE SM 58
- 4x SHURE Beta 57a
- 6x SHURE SM 57
- 2x Beyerdynamic M 88 TG
- 2x Beyerdynamic M 201 TG

- 8x Radial Pro-Di (mono)
- 2x Radial Pro2-Di (stereo)
- 4x BSS Ar 133 activ-Di

LIGHTING

FRONTTRUSS

- 4x CLAY PAKY AXCOR 400 Profile
- 4x CLAY PAKY AXCOR 300 Wash

MIDTRUSS

- 5x CLAY PAKY AXCOR 400 Profile
- 4x CLAY PAKY AXCOR 300 Wash

BACKTRUSS

- 3x CLAY PAKY AXCOR 400 Profile
- 4x CLAY PAKY AXCOR 300 Wash
- 2x MARTIN Atomic 3000 LED

STAGE FLOOR

- 4x Robe Robin 100 LED Beam
- 2x Martín Atomic 3000 LED
- 2x Elation DTW 350 FP

FOG

- 1x SMOKE FACTORY Tourhazer II „Boxed Version“
- 1x SMOKE FACTORY Nebelmaschine Data II

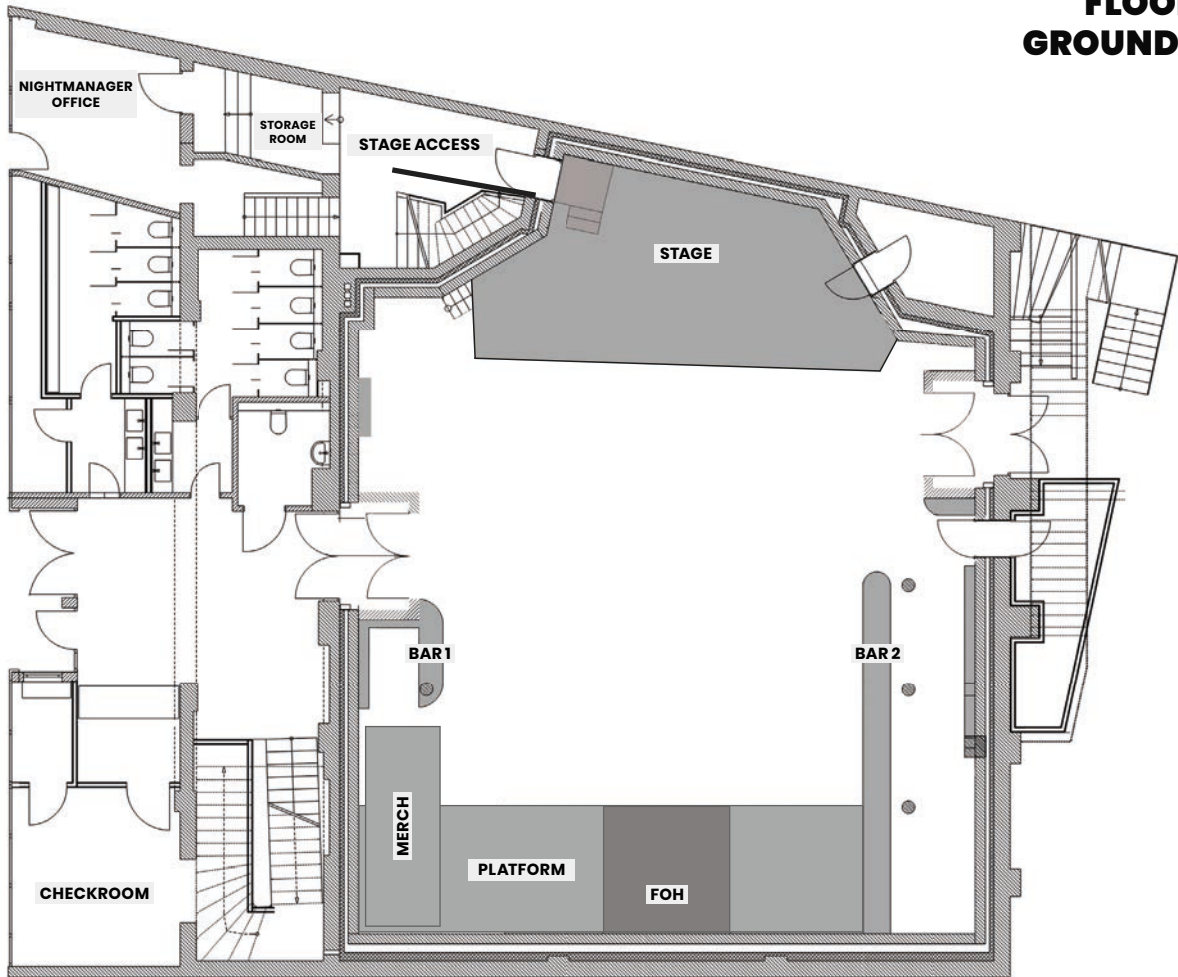
DESK

- 1x ChamSys MagicQ MQ100 Pro

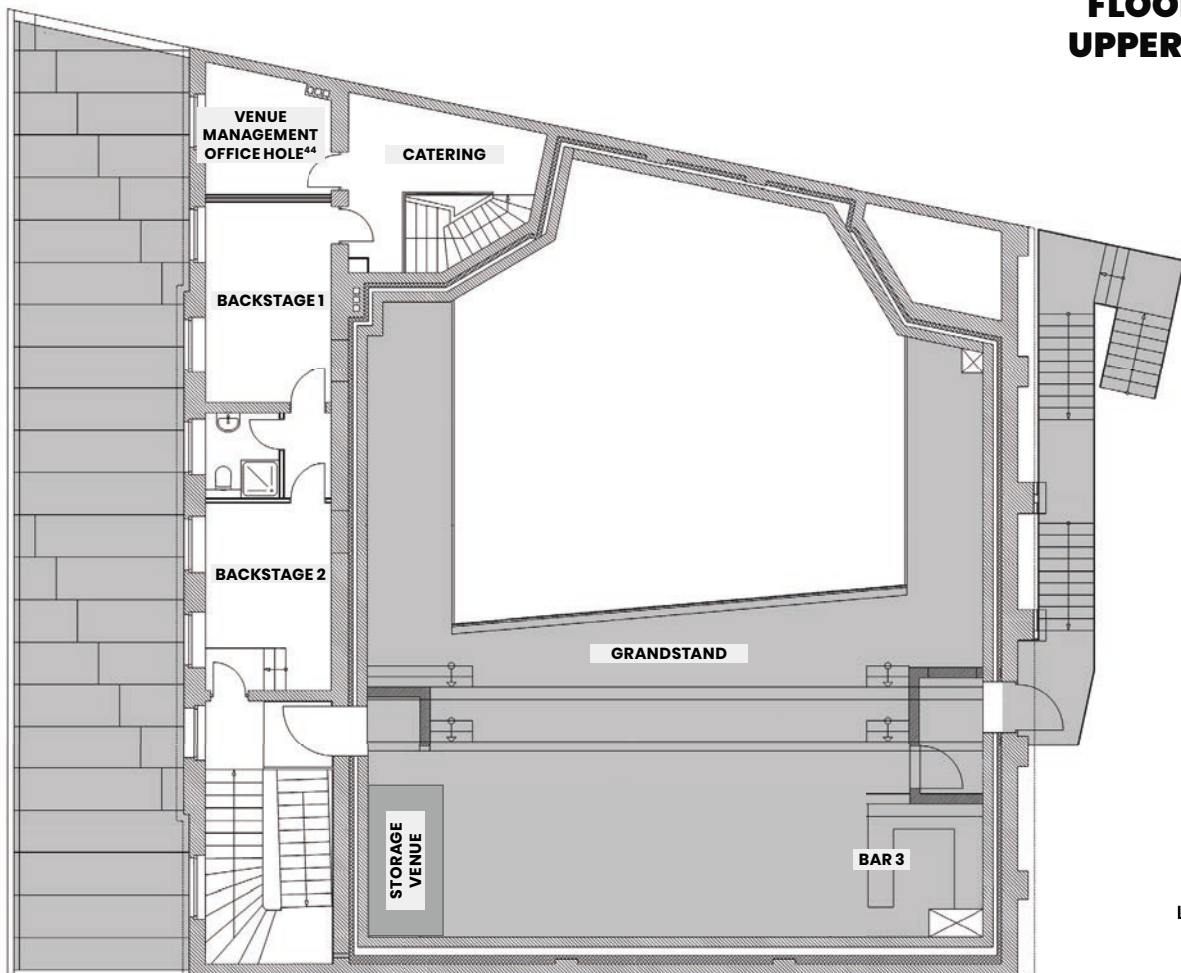
Hole⁴⁴ DMX Patch List

Fixture Nr	Manufacturer	Type	Mode	DMX Address	DMX Channels	Position
Axcor Profile 400 Stage						
1	Clay Paky	Axcor Profile 400	0	1.001	36	
2	Clay Paky	Axcor Profile 400	0	1.037	36	
3	Clay Paky	Axcor Profile 400	0	1.073	36	
4	Clay Paky	Axcor Profile 400	0	1.109	36	
Axcor Profile 400 MID						
5	Clay Paky	Axcor Profile 400	0	2.001	36	
6	Clay Paky	Axcor Profile 400	0	2.037	36	
7	Clay Paky	Axcor Profile 400	0	2:073	36	
8	Clay Paky	Axcor Profile 400	0	2.109	36	
Axcor Profile 400 Front						
9	Clay Paky	Axcor Profile 400	0	2.181	36	
10	Clay Paky	Axcor Profile 400	0	2.217	36	
11	Clay Paky	Axcor Profile 400	0	2.253	36	
12	Clay Paky	Axcor Profile 400	0	2.289	36	
Axcor Wash 300 Stage						
13	Clay Paky	Axcor Wash 300	0	1.145	16	
14	Clay Paky	Axcor Wash 300	0	1.161	16	
15	Clay Paky	Axcor Wash 300	0	1.177	16	
16	Clay Paky	Axcor Wash 300	0	1.193	16	
Axcor Wash 300 MID						
17	Clay Paky	Axcor Wash 300	0	2.325	16	
18	Clay Paky	Axcor Wash 300	0	2.341	16	
19	Clay Paky	Axcor Wash 300	0	2.357	16	
20	Clay Paky	Axcor Wash 300	0	2.373	16	
Axcor Wash 300 Front						
21	Clay Paky	Axcor Wash 300	0	2.389	16	
22	Clay Paky	Axcor Wash 300	0	2.405	16	
23	Clay Paky	Axcor Wash 300	0	2.421	16	
24	Clay Paky	Axcor Wash 300	0	2.437	16	
Robin 100 Beam Stage						
25	Robe	Robin 100 LED Beam	1	1.265	35	
26	Robe	Robin 100 LED Beam	1	1.300	35	
27	Robe	Robin 100 LED Beam	1	1.335	35	
28	Robe	Robin 100 LED Beam	1	1.370	35	
Robin 100 Beam (Dancefloor)						
29	Robe	Robin 100 LED Beam	1	3.001	35	
30	Robe	Robin 100 LED Beam	1	3.036	35	
31	Robe	Robin 100 LED Beam	1	3.071	35	
32	Robe	Robin 100 LED Beam	1	3.106	35	
33	Robe	Robin 100 LED Beam	1	3.141	35	
34	Robe	Robin 100 LED Beam	1	3.176	35	
35	Robe	Robin 100 LED Beam	1	3.211	35	
36	Robe	Robin 100 LED Beam	1	3.246	35	
Hazer/ Smoke						
50	Smoke Factory	Tour Hazer 2		1:405	2	
55	Smoke Factory	Data 2		1:407	1	
Strobe						
40	Martin	Atomic 3000 LED	Extd	1:209	14	Stage Truss
41	Martin	Atomic 3000 LED	Extd	1:223	14	Stage Truss
42	Martin	Atomic 3000 LED	Extd	1:237	14	Stage Floor
43	Martin	Atomic 3000 LED	Extd	1:251	14	Stage Floor
Blind						
60	Elation	DTW 350 IP	2cell	1:408	2	Stage Truss
62	Elation	DTW 350 IP	2cell	1:410	2	Stage Truss
64	Elation	DTW 350 IP	2cell	1:412	2	Stage Floor
66	Elation	DTW 350 IP	2cell	1:414	2	Stage Floor

FLOOR PLAN GROUND FLOOR

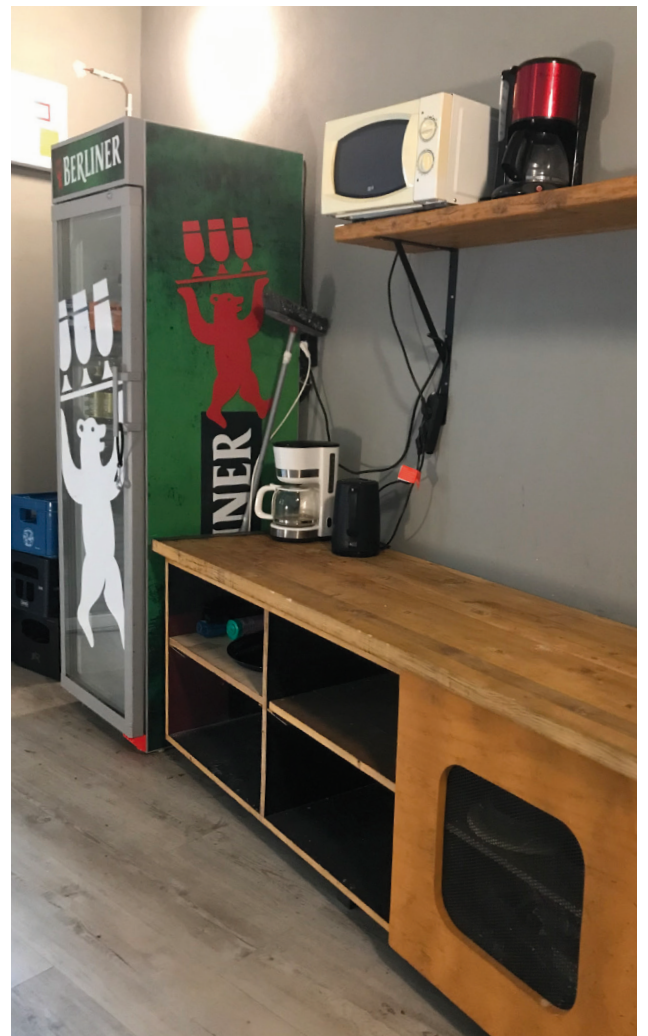


FLOOR PLAN UPPER FLOOR



Last update:
30.01.2024







Hermannstraße

Hermannstraße
Silbersteinstraße

Silbersteinstraße

Silbersteinstraße

Hertastraße

Bendastraße

Bendastraße

Kranoldstraße

Kranoldstraße

Hermannstraße

Hertastraße

Bendastraße

Mariendorfer Weg

Delbrückstraße

Delbrückstraße

Bendastraße

HOLE⁴⁴
Hermannstr. 146
D-12051 Berlin

Glasower Str.

Glasower Str.

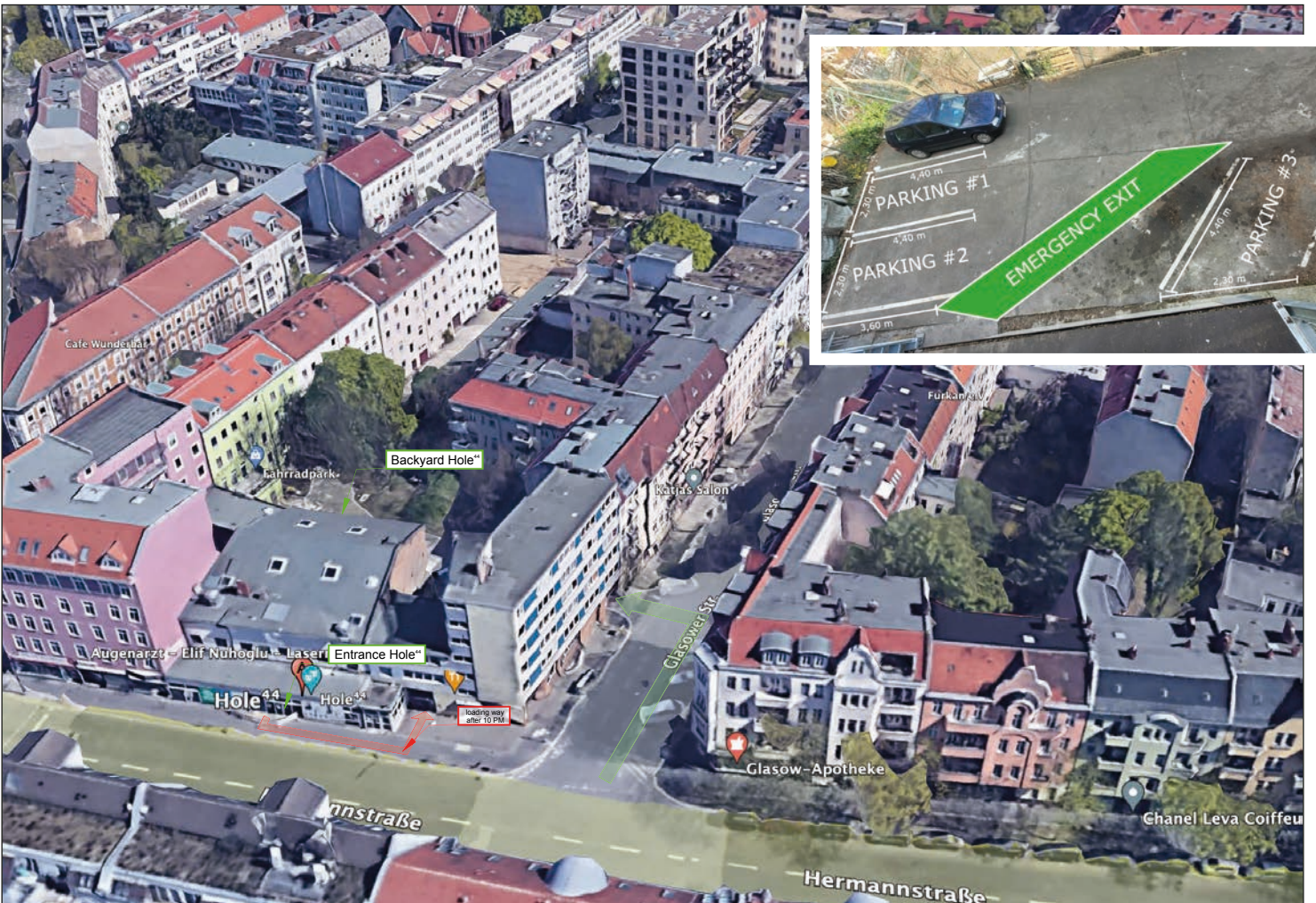
Hermannstraße

Juliusstraße

Juliusstraße

Britzer Damm
Britzer Damm

A-100 (city-Highway)



CONTACT

CLUB ADDRESS

HOLE

Hermannstraße 146

D-12051 Berlin

REGISTERED OFFICE ADDRESS

Channel Music GmbH

Gleditschstraße 79

D-10823 Berlin

Registration court: Berlin – Charlottenburg

Commercial register: 127498

VAT ID: DE272358360

CONTACT DETAILS

General

Phone: +49 30 78 09 98 28

Mail: info@hole-berlin.de

Booking

Mail: booking@channelmusic.de

Produktion

Mail: produktion@hole-berlin.de



HOLE

Hermannstraße 146, D-12051 Berlin

Phone: 0176 977 33 539 E-Mail: info@hole-berlin.de

Website: hole-berlin.de

Last update:
30.01.2024

Page 11/11